

DT SERIES FLOODED BATTERY

DT126 (6V240Ah)



CHARACTERISTICS

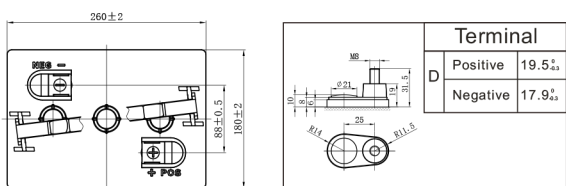
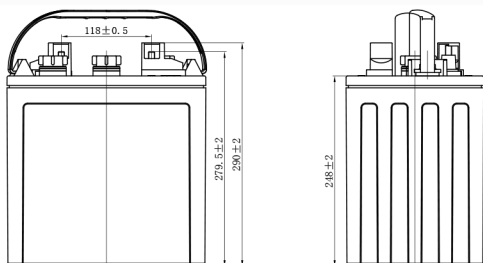
Item	Specifications	
Voltage	6V	
Dimension	Length	260mm (10.2inches)
	Width	180mm (7.09inches)
	Container Height	248mm (9.76inches)
	Total Height	279.5mm (11.0inches)
Approx Weight	30.5 kg (65.5lbs)	
Terminal	DT-M8(A)	
Container Material	PP	
Rated Capacity	20HR	240Ah
	5HR	195Ah
Reserve Capacity	25A	485min
	75A	130min

GENERAL FEATURES

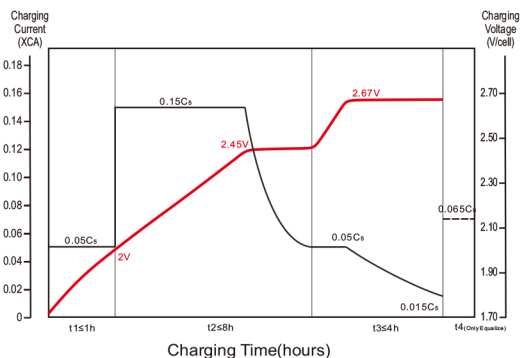
- Long cycle service life, strong recovery ability of deep discharge
- Low risk of thermal runaway, easy maintenance
- High energy, low internal resistance, low self-discharge
- Reliable sealing structure ensures no leakage during use
- Special design and structure increase battery performance
- The special alloy improves the corrosion resistance of the plate increases the service life and good deep discharge performance

APPLICATIONS

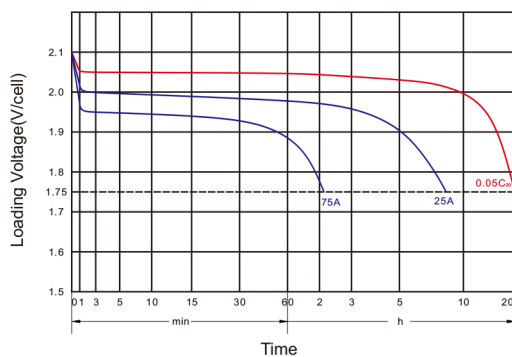
- Electric vehicle
- Golf cart
- Sightseeing bus
- Cleaning equipment
- AWP
- Marine&RV



Charging Characteristics



Discharge Characteristics



Designed in compliance with applicable BCI standard.
Tested in compliance to BCI standard.