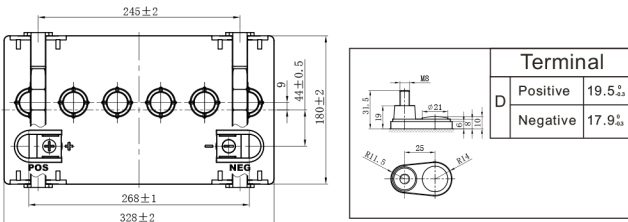
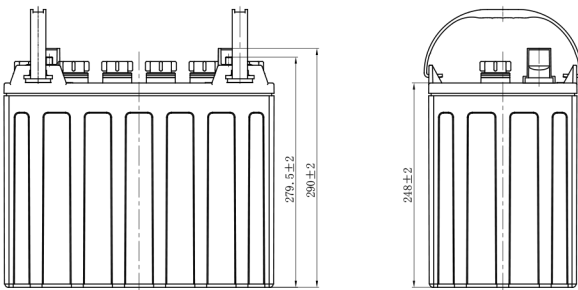


# DT SERIES FLOODED BATTERY

## DT1275 (12V150Ah)



## CHARACTERISTICS

Item	Specifications	
Voltage	12V	
Dimension	Length	328mm (12.9inches)
	Width	180mm (7.09inches)
	Container Height	248mm (9.76inches)
	Total Height	279.5mm (11.0inches)
Approx Weight	37.0kg (80.9lbs)	
Terminal	DT-M8(A)	
Container Material	PP	
Rated Capacity	20HR	150Ah
	5HR	120Ah
Reserve Capacity	25A	280min
	56A	102min

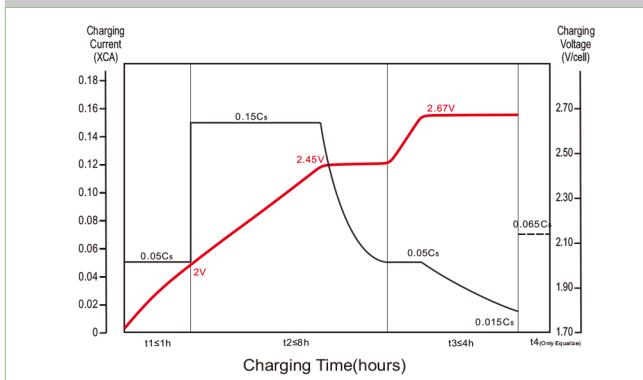
## GENERAL FEATURES

- Long cycle service life, strong recovery ability of deep discharge
- Low risk of thermal runaway, easy maintenance
- High energy, low internal resistance, low self-discharge
- Reliable sealing structure ensures no leakage during use
- Special design and structure increase battery performance
- The special alloy improves the corrosion resistance of the plate increases the service life and good deep discharge performance

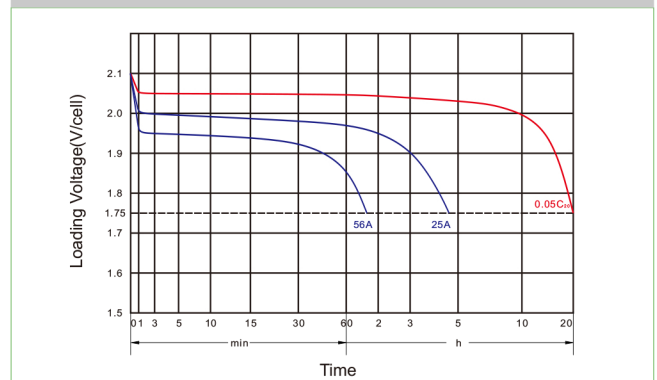
## APPLICATIONS

- Electric vehicle
- Cleaning equipment
- Golf cart
- AWP
- Sightseeing bus
- Marine&RV

### Charging Characteristics



### Discharge Characteristics



Designed in compliance with applicable BCI standard.  
Tested in compliance to BCI standard.